



**شركة نجوم الشوقية للمقاولات العامة**

**Nujoom Al Shawqiyya General Contracting Company**



Nujoom Al Shawqiyya General Contracting Company drives growth through vision, discipline, and purposeful leadership. We unite specialized teams under one strategy, creating a diversified ecosystem across construction, engineering, interior finishing, MEP services, and manufacturing solutions. Together, our capabilities form a strong network capable of delivering complex projects with precision and reliability.

- CEO

# Our philosophy is simple

Excellence is not an act it is our ongoing standard. We work with integrity, innovate with purpose, and build for the future. Beyond delivering projects, we shape industries, develop talent, and drive sustainable progress. As we grow, I am confident in the opportunities ahead. Together with our partners, clients, and teams, we are creating a legacy of trust, innovation, and long-term value.



# About Our Company

Nujoom Al Shawqiyya General Contracting Company is a Saudi company delivering integrated construction, interior fit-out, MEP, and manufacturing solutions across the Kingdom.

We combine technical expertise, operational discipline, and creative vision to deliver reliable, high-quality, and sustainable projects in the residential, commercial, and industrial sectors.

Through a commitment to engineering excellence, modern building practices, and efficient project management, we ensure each project is executed with precision, safety, and long-term value. Our multidisciplinary teams work collaboratively to provide clients with comprehensive solutions tailored to their needs.



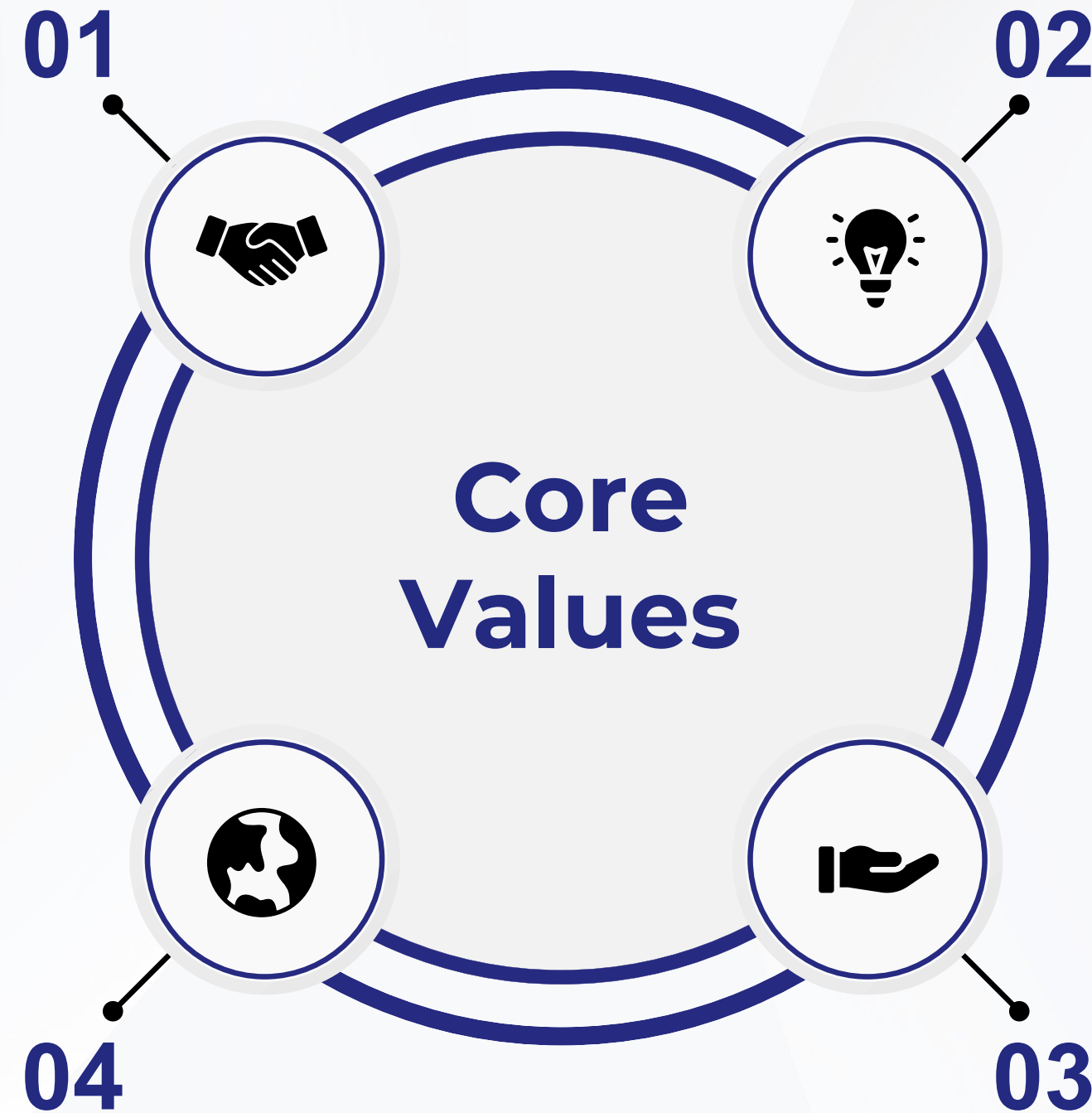
## | Core Values

### Integrity

We operate with transparency, honesty, and responsibility, building trust with clients, partners, and communities.

### Sustainability

We prioritize environmentally conscious practices and long term solutions that support sustainable growth.



### Innovation

We embrace new technologies, smarter methods, and forward thinking ideas that enhance performance and create value.

### Reliability

We deliver consistent results, dependable service, and stable operations across all subsidiaries and projects.

# Strength



Nujoom Al Shawqiyya General Contracting Company's core competencies blend cross-industry expertise, integrated operations, and strict quality standards to ensure efficient, reliable performance across all sectors. With strong technical capability and a commitment to sustainability, we consistently deliver long-term value.

## Diversified Expertise

A strong portfolio covering construction, materials, lighting, water solutions, and more.

## Quality & Consistency

Commitment to delivering premium services and reliable performance in every project.

## Integrated Operations

Subsidiaries work under a unified strategy, ensuring efficiency and consistently high quality.

## Strong Leadership

Clear strategic direction that drives long-term stability and future-ready growth.

## | Our Services



Construction &  
Finishing  
Works

Gypsum Board Works  
Masonry  
Tile, Marble, and Stone Installation  
Cladding  
Epoxy Flooring  
Play Yards  
Swimming Pools



MEP Services

Electrical Installations  
Mechanical Systems  
Plumbing Networks  
Fire Alarm Systems  
AC Ducts And Cooper VRV



Aluminium

Aluminium House Cladding  
Aluminium Doors, Windows  
& Boxes



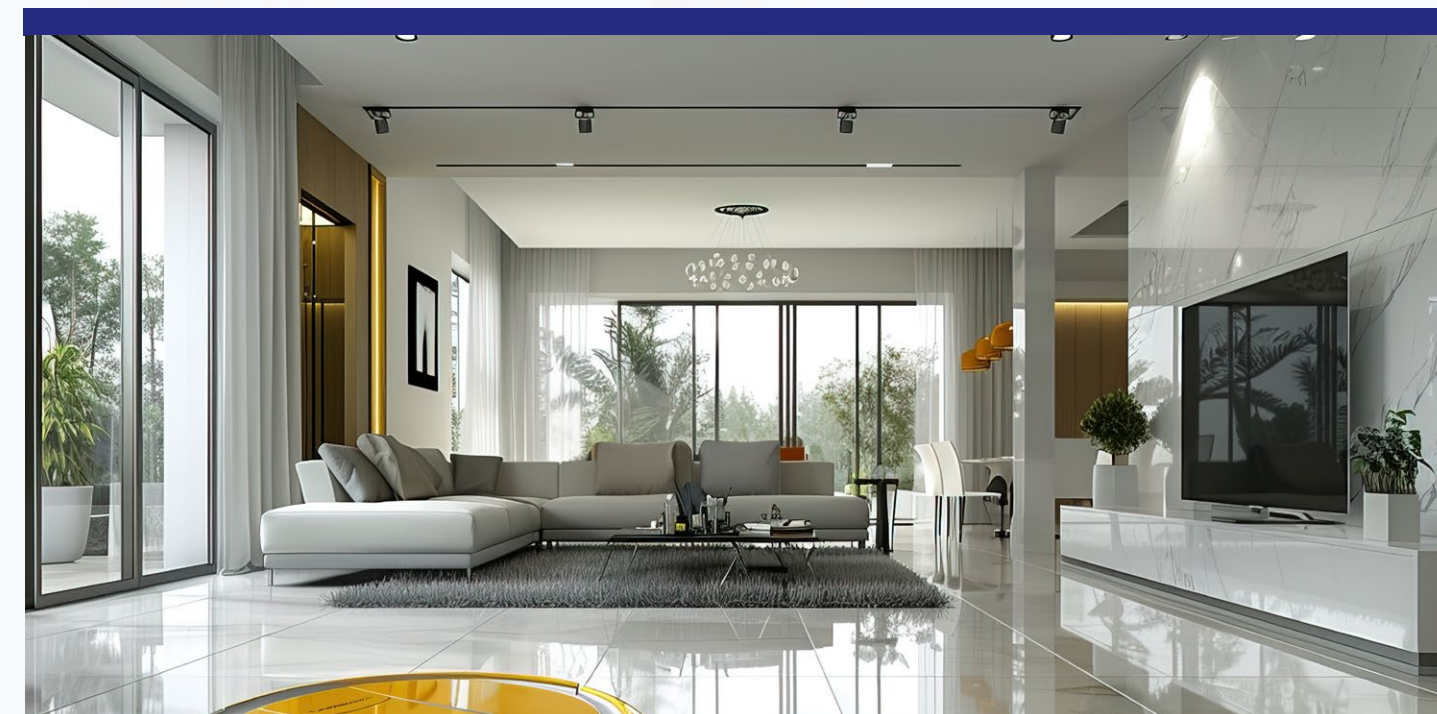
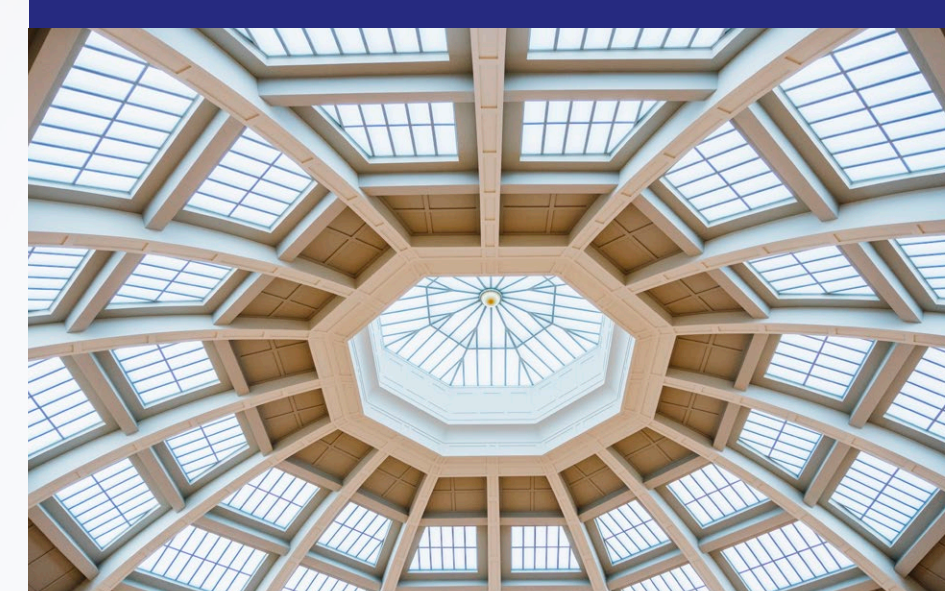
External  
Works

All Civil Work  
Steel Car Park Shades  
Landscaping Work

# Interior & Finishing Solutions

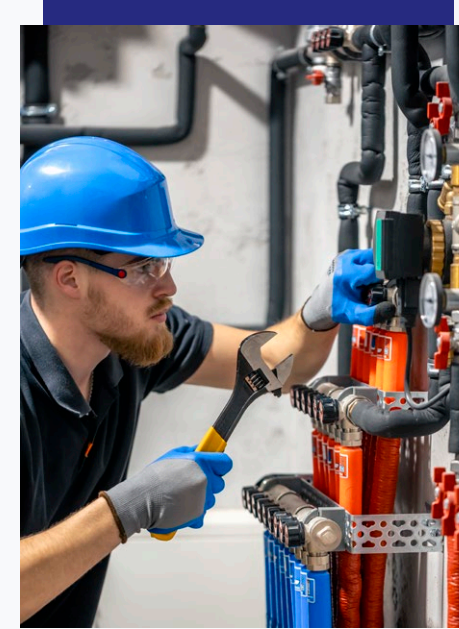
We provide complete interior solutions tailored to meet diverse project requirements, including gypsum partitions and ceilings, high-precision tiling, marble and stone installations, and seamless epoxy flooring. Our team ensures every finish is durable, functional, and visually refined — delivering modern, high-quality interiors that enhance the overall aesthetic and performance of each space

+



# MEP Solutions

From electrical and mechanical installations to plumbing networks and fire alarm systems, our MEP teams deliver fully integrated solutions that prioritize safety, reliability, and long-term performance. We ensure seamless coordination across all systems, enabling efficient project execution and smooth operation for residential, commercial, and industrial environments .



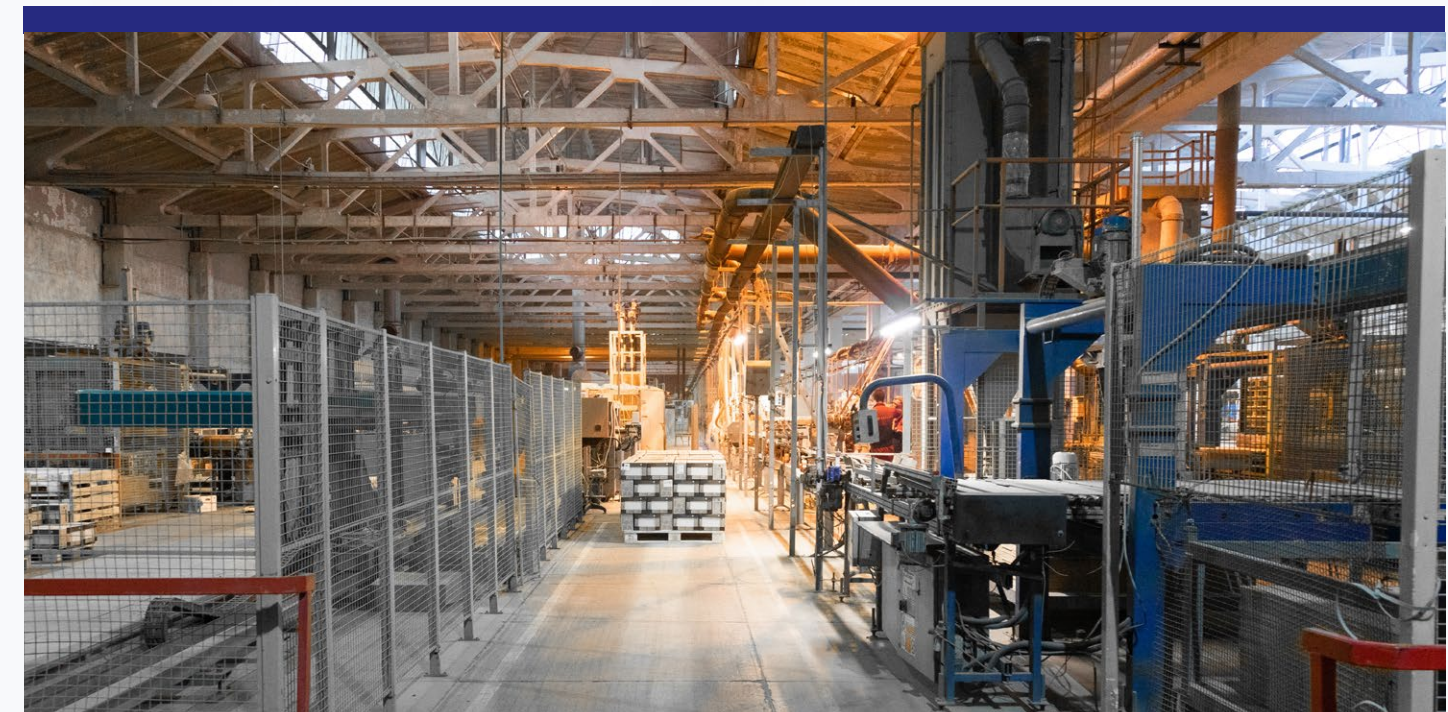
+



# Manufacturing & Aluminium

■ We manufacture custom aluminium systems, shade structures, and exterior components engineered with precision and durability. Each product is designed to withstand demanding conditions while delivering high performance, aesthetic appeal, and long-lasting reliability—making them ideal for a wide range of residential, commercial, and industrial applications.

+



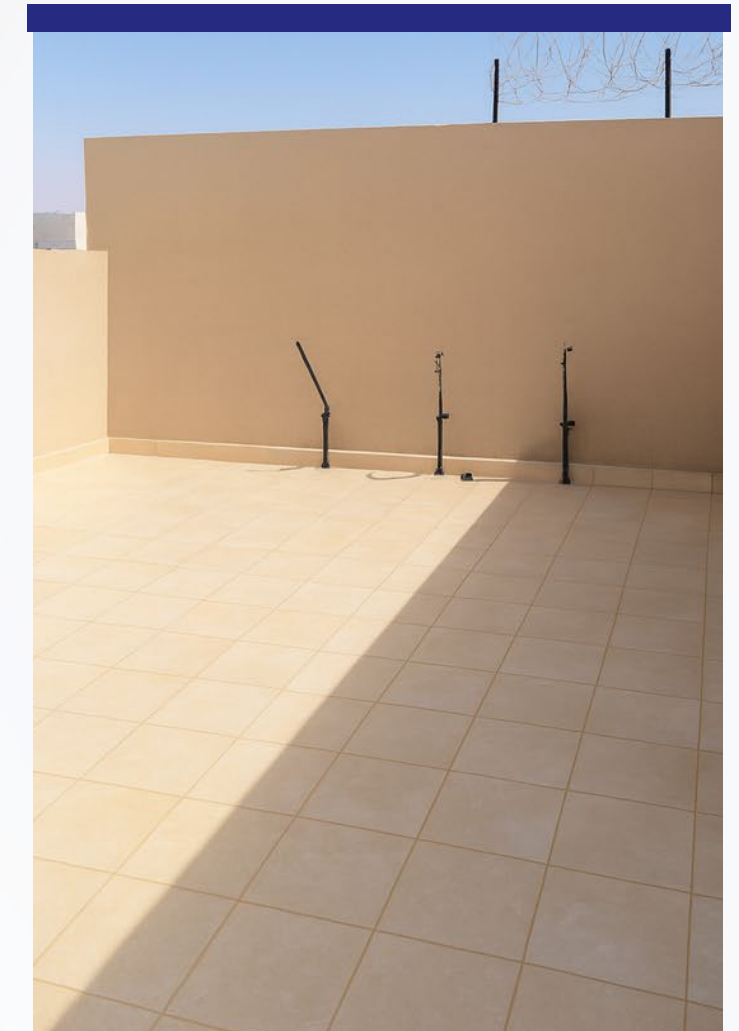
# Al-Rimal District – Roof Insulation Works

- The project involved full waterproofing and thermal insulation of the rooftop using high-quality materials and proper surface preparation. All sealing and finishing works were completed with precision to ensure long-term protection against weather and structural wear.
- This upgrade strengthens the building's durability while improving energy efficiency and reducing future maintenance needs. The enhanced insulation system helps extend the overall lifespan of the property.

+



Before



After

# King Faisal Takhasusi Hospital – Epoxy Parking Works

- Al Shawqia Stars completed the full Epoxy Parking Flooring works at King Faisal Specialist Hospital under the main contractor Al Marshad Contracting Group. The project was delivered with high quality standards, on schedule, and in line with all technical requirements, reflecting our expertise in large-scale epoxy flooring solutions.

+



# Al-Rimal District – Aluminum Doors & Steel Mailbox Installation

- Aluminum doors were fabricated and installed with precise measurements to ensure smooth operation and lasting durability. A secure steel mailbox system was also fitted to improve accessibility and resident convenience.
- The materials used offer strong resistance to corrosion, heat, and external factors. Together, these installations enhance both the functionality and modern look of the property.

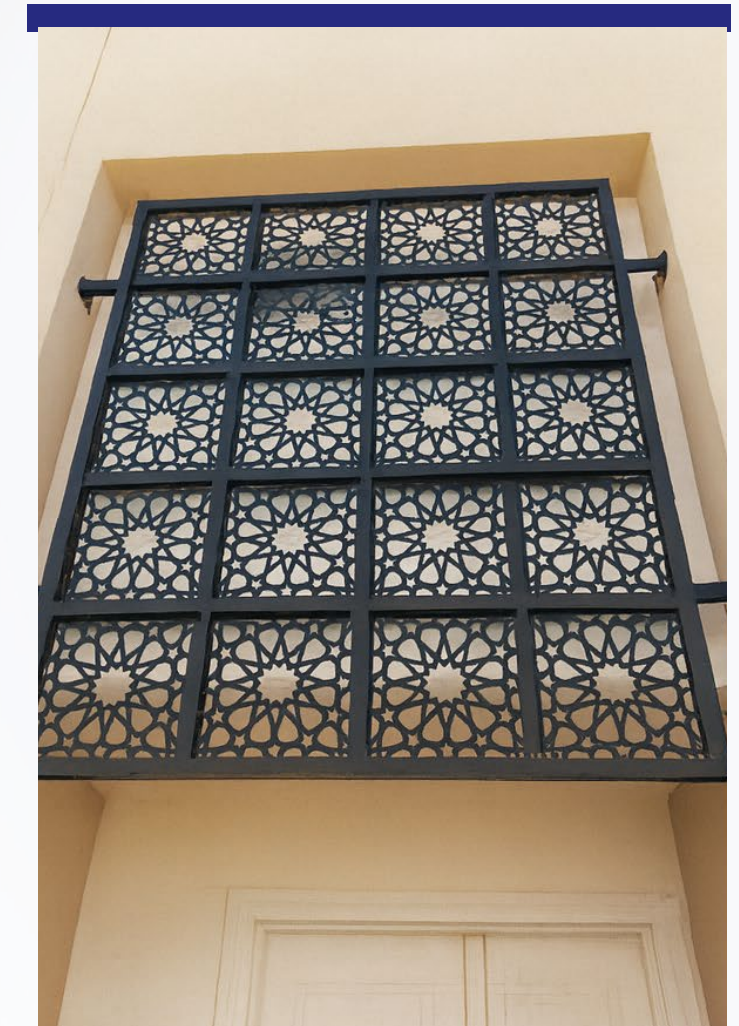


# Al-Rimal District – CNC Steel Panel Installation

- Custom CNC-cut steel panels were supplied and installed to enhance the balcony façade with modern design and clean detailing. The structure was precisely fitted to ensure strength and long-lasting performance.
- This installation elevated the visual appeal of the property with a contemporary architectural finish. The durable steel panels provide reliable protection against weather and external impact.



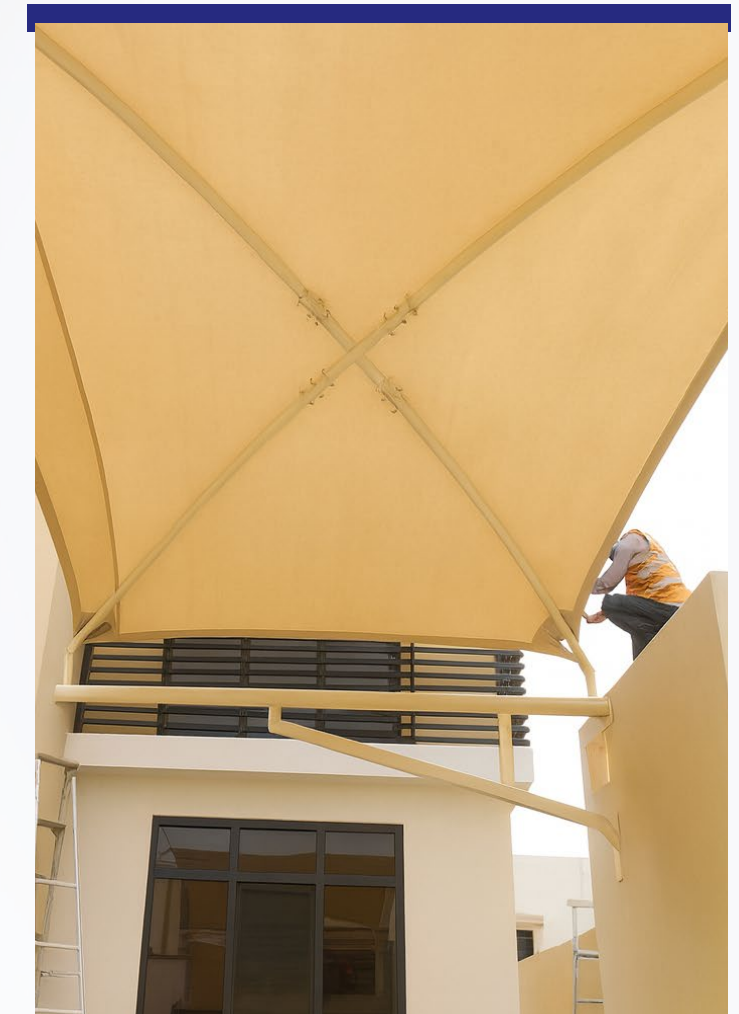
Before



After

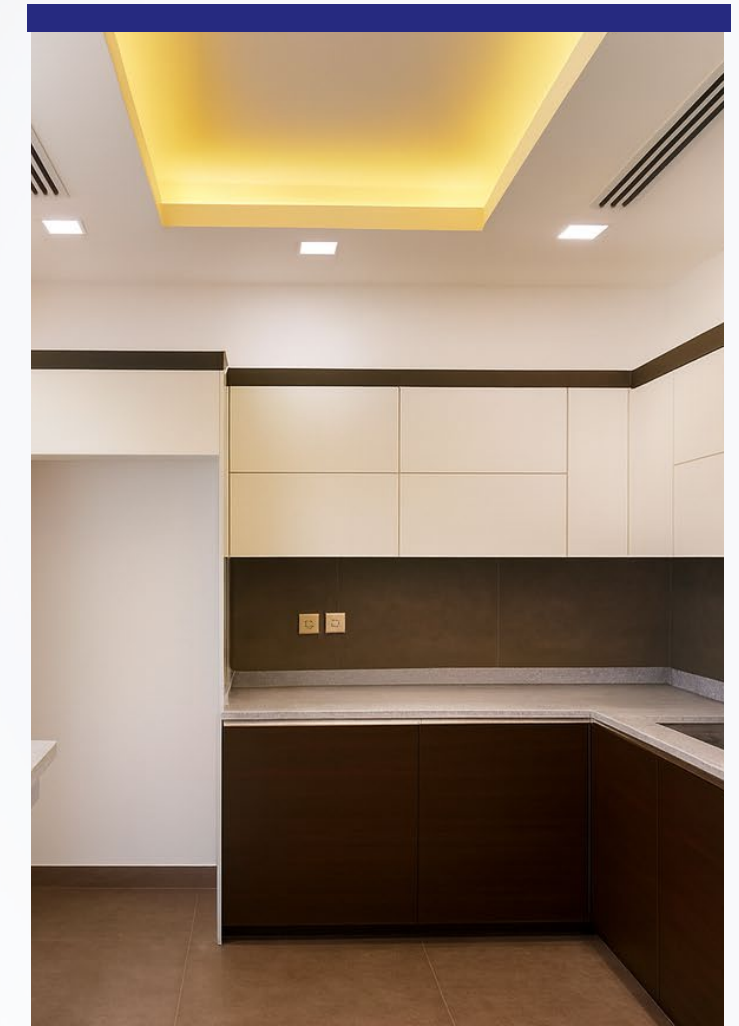
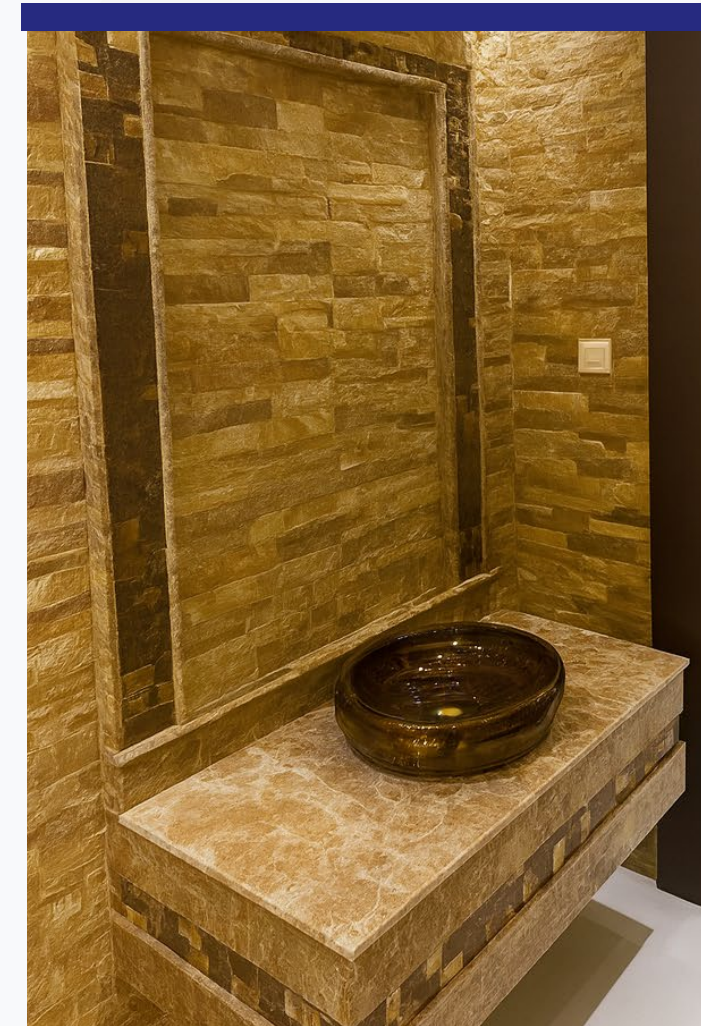
# Al-Rimal District – Shade Structure Installation

- High-quality shade structures were designed and installed using re-inforced materials suitable for residential outdoor areas. The work included accurate alignment and secure fixing to ensure long-term performance.
- These shades provide comfort, temperature control, and additional outdoor usability for residents. Their durable construction ensures stability and resistance to harsh weather conditions.



# Diplomatic Quarter – Kitchen Supply & Interior Finishing

- A modern kitchen system was supplied and installed with high-quality fittings and functional storage solutions. The work included customized finishes to match the interior design requirements.
- The result delivers an elegant and practical kitchen environment suitable for daily use. Premium materials and careful execution ensured exceptional aesthetic and long-term performance.

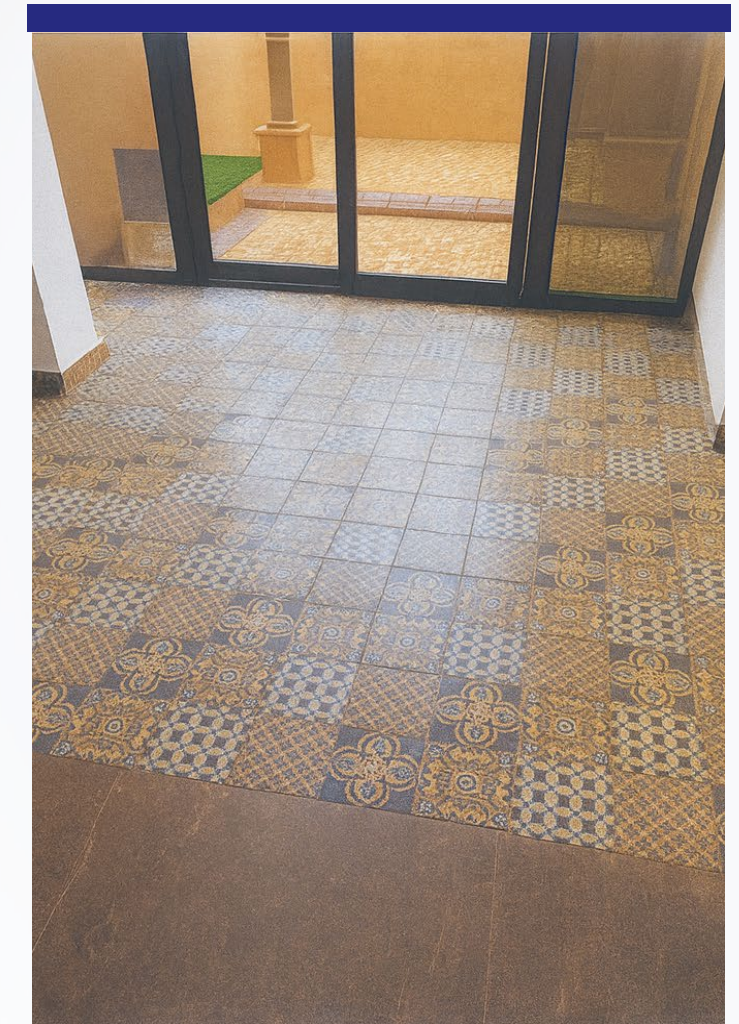


# Diplomatic Quarter – Ceramic & Porcelain Flooring Works

- Porcelain and ceramic tiles were installed with precision alignment and levelled surfaces to achieve a seamless finish.  
High-grade adhesives and grout materials were used to ensure durability.

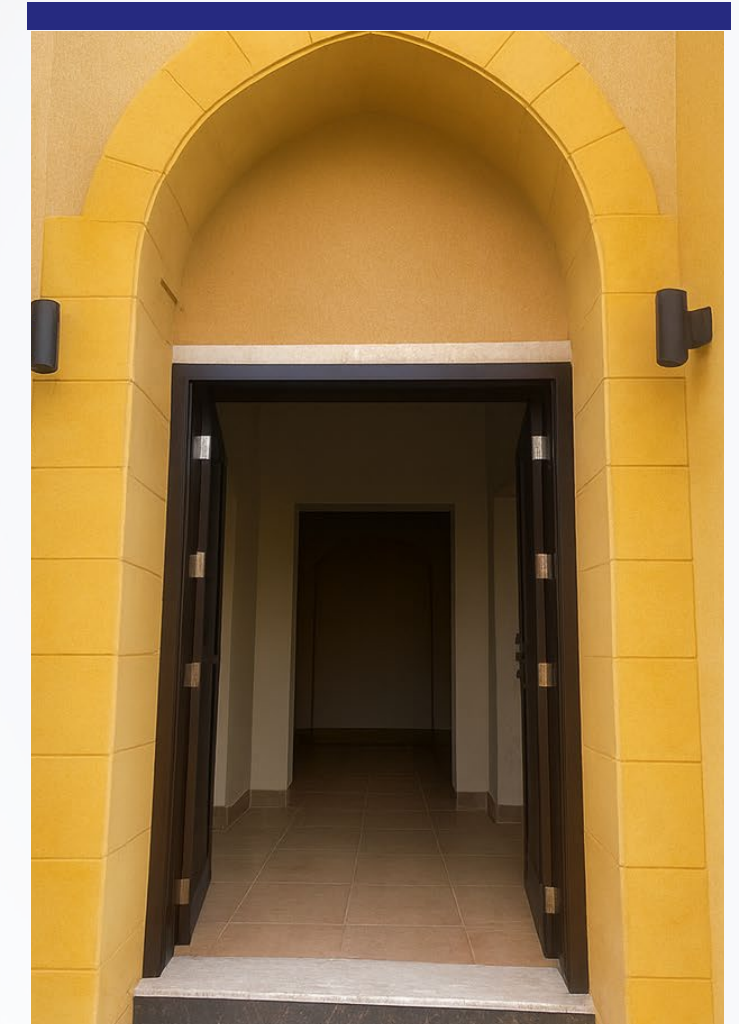
+

- The upgraded flooring enhances the beauty and usability of the interior spaces.  
Its strength and quality provide long-term resistance to wear and moisture.



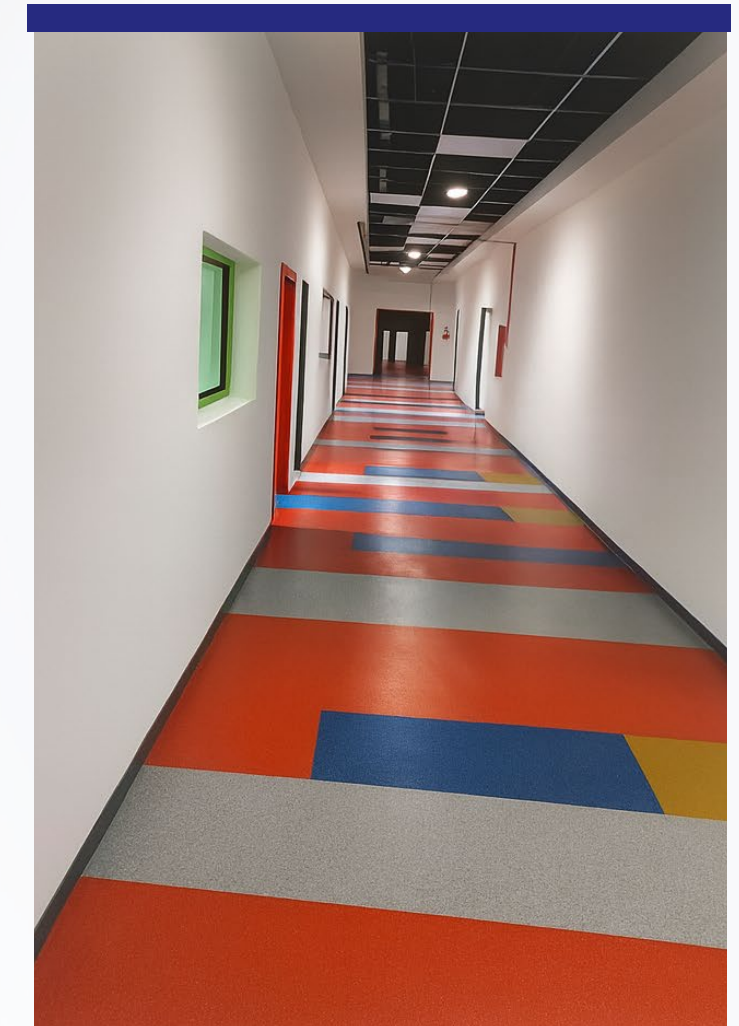
# Diplomatic Quarter – Entrance Renovation

- The entrance area was fully renovated, including structural repair, restoration, and detailed finishing. Damaged elements were replaced to restore the original architectural look.
- This refurbishment improved the visual appeal and strength of the access point. The enhanced entrance now provides a more welcoming and durable pathway for users.



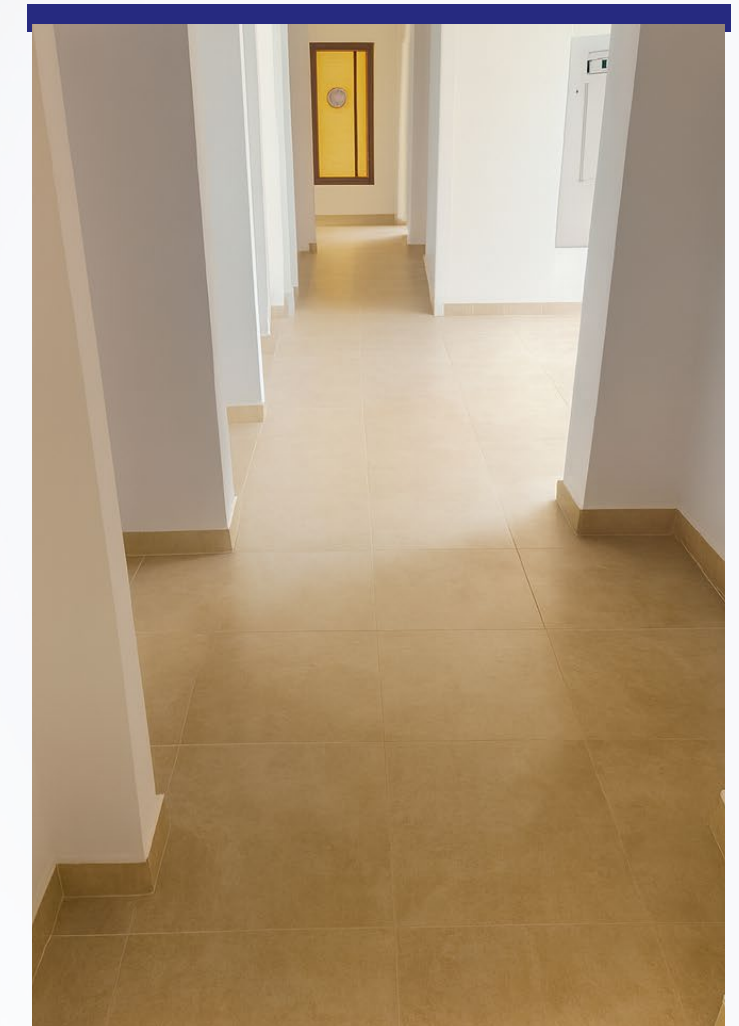
# Islamic Education Schools – Vinyl Flooring Installation

- The entrance area was fully renovated, including structural repair, restoration, and detailed finishing. Damaged elements were replaced to restore the original architectural look.
- +
- This refurbishment improved the visual appeal and strength of the access point. The enhanced entrance now provides a more welcoming and durable pathway for users.



# Gate 9 Project – Cantilever Shade Installation

- Cantilever shade structures were designed, fabricated, and installed using reinforced materials. The work included secure fixing to ensure long-term stability and protection.
- These shades improve comfort and extend usable outdoor space. Their strong construction ensures resistance against sun, wind, and weather changes.



# What Makes Us Different?

**Nujoum Al Shawqiyya stands out through its integrated, multi-industry expertise, which unifies construction, fit-out, MEP, and manufacturing capabilities under one strategic framework. Our operations are synchronized and driven by strong leadership, ensuring high-quality outcomes, consistent standards, and streamlined execution across every project. This combination of cross-sector capability, disciplined project management, and modern engineering practices sets Nujoum Al Shawqiyya apart as a forward-thinking and dependable partner.**

# Get In Touch!



[info@alshawqiya-stars.sa](mailto:info@alshawqiya-stars.sa)



[alshawqiya-stars.sa](http://alshawqiya-stars.sa)



+966-581878181